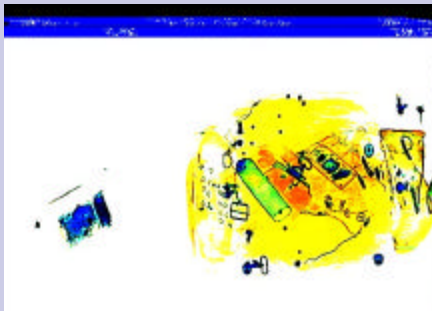


Course Costs

The X-Ray Interpretation Training Course is conducted several times a year. Participants can bring their X-Ray equipment or make arrangements with us to provide equipment.

Training is available on portable film based, real time and cabinet type X-Ray systems. Training is also conducted at clients' sites. We can custom tailor training to your organizations needs.

The budgeting cost of the one day (8 hour) course, conducted on a client's site, is approximately \$2300.00 for up to 8 students in the USA. This includes instructor fee & travel expenses. Costs may be higher in some areas during certain times of the year. Overseas training is available. Please contact us for course availability and a specific training quote.



Corporate Overview

Explotech Ltd. Co. is a Houston, Texas based small business specializing in a broad scope of engineering and related training services for security, explosives, and counter-terrorism activities. We provide a variety of government and commercial clients worldwide with comprehensive solutions to complex explosive problems.

Explotech instructors and engineering staff have real world, hands-on, domestic and international operational experience in explosives and security operations. We are actively involved in training, equipment selection, procedures and technical evaluations for the detection, identification, neutralization and disposal of explosives, terrorist destructive devices, military ordnance, and weapons of mass destruction (WMD) under a number of Government and Industry programs.

Explotech can provide assistance in the acquisition of foreign and domestic explosives and munitions, specializing in small quantity, difficult to procure, explosives and munitions for research, evaluation or government use. We render safe, inspect, package, and manage the transport of explosives and munitions worldwide.

Our engineering services include design, evaluation, prototyping, manufacturing, systems integration, and live test of explosives, munitions, and countermeasures equipment for a variety of explosive threats.

We also provide Explosive Safety Training in accordance with DOD Instruction 4145.26M.

Please contact us to find out how Explotech can provide solutions for your organization.

EXPLOTECH LTD. CO.

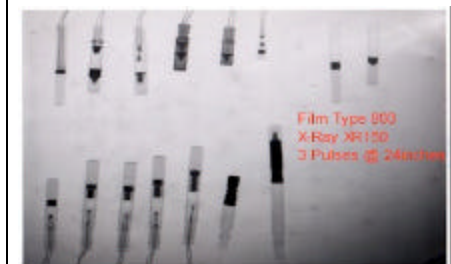
Post Office Box 272372
Houston, Texas 77277-2372 USA
800-850-XRAY (9729)
(225) 612-4806 fax

E-mail: xraytraining@explotech.net
<http://www.explotech.net>
<http://www.counterterrorism.com>



**Detection
is Deterrence**

X-Ray Interpretation Training



EXPLOTECH LTD. CO.

Tel: 800-850-XRAY www.explotech.net

Course Outline



Electric Detonators
Polaroid TPX Film
XR-150 X-Ray 5 Pulse

This course has been developed to meet the security requirements of government and industry in providing enhanced security screening for Weapons, Bombs, and Explosive Devices (IED).

The course is a complete training program to screen, detect, and manage a government or corporate security X-Ray screening program.

Key Topics

- Recent Domestic and International Incidents
- Bombs and Improvised Explosive Devices
- Radiation Safety
- Operation of the X-Ray Machine
- Standard Operating Procedures (SOP's)
- Bomb Recognition Points
- X-Ray Interpretation
- Suspicious Article Procedures

This 8-hour course is modeled after U. S. Government X-Ray screening programs. Each student will be required to properly identify a group of articles as suspicious or not suspicious with 100% proficiency to achieve certification. Each student will be provided with a student workbook. An annual refresher course is available for all graduates of the course. Web based proficiency / refresher training will soon be available via the Internet to all registered students.

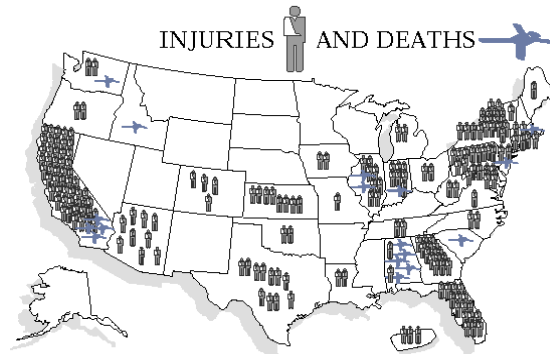
Course Objectives

Students undergo a series of rigorous, practical, hands-on exercises to detect Weapons, Bombs and Improvised Terrorist Explosive Devices using the X-Ray machine. The course curriculum is comprised of approximately 30 % Lecture and 70% hands on practical training.

Upon successful completion of the course, students will be capable of screening and detecting suspicious articles. Students will be able to apply systematic techniques for the proper response to a suspicious article incident. The course is designed to enhance any organization's security screening program.

Why do you need X-Ray Interpretation Training?

The last decade has brought many changes and challenges to the field of security X-Ray Interpretation. One of the greatest changes has been the increased use of Bombs or Improvised Explosive Devices (IEDs) for everything from gaining attention, to extortion and revenge. Two thousand two hundred and seventeen (2,217) bombing incidents were reported to the FBI's Bomb Data Center (BDC) in 1997. Deaths from bombings numbered eighteen (18) in 1997. Bombs also injured 204 people.



Property Damage in 1997 from bombs was approximately 9 million dollars. That is an increase from the 5 million in monetary damages reported for 1996. X-Ray screening equipment operated by properly trained personnel is the best defense in the detection of suspicious articles. Without proper training and the understanding of what the X-Ray image is displaying, even the most advanced X-Ray equipment may as well be unplugged.

What is X-Ray Interpretation?

X-Ray Interpretation is the analysis of the output from X-Ray equipment. The output can be a simple black and white image, a density based pseudo color, or other enhanced image. There are several things an operator must be able to identify when looking at an X-Ray image of an article. Any one of these things alone is not necessarily cause for suspicion, but a Bomb or IED contains several components that must be present. An operator should be able to identify all of these components and examine articles, packages and letters with them in mind. Some articles will require several exposures at different angles to determine their identity. Several components to look for in a X-Ray Image include:

Power Supply

A key indicator may be too many batteries for the item displayed, or batteries that are not wired together with the same craftsmanship as the rest of the device.

Initiators

Most initiators can be difficult to detect due to their relative lack of density.

Explosives

Explosives can be solid, liquid or gas and can take on many shapes.

Switches

A switch can be made from most any available material. Are there any electrical or mechanical switches that should not be present?

